

PR CV 355
PORT XÀBIA-MONTGÓ

Port Xàbia - Montgó

XÀBIA NATURE AREAS NETWORK



Data sheet

Route: STRAIGHT

Distance:

PR - 15.951 m.

Tangó trail- 480 m.

Molins trail- 3.847 m.

Time:

PR - 6 hrs. 45 mins.

V.Tangó - 20 mins.

V.Molins - 1 hrs.

Slope: 1.430 m.

Difficulty:

MEDIUM - HIGH

SIGNPOSTING ON THE ROUTE



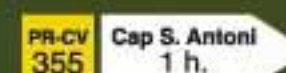
Continue route



Wrong direction



Change direction



Direction

CONDUCT



PORT XÀBIA-MONTGÓ

PR CV 355
PORT XÀBIA-MONTGÓ



Points of interest

- | | |
|-------------------|------------------------------------|
| 1 Dique Levante | 2 Cala Tangó |
| 3 Cap Sant Antoni | 4 Mirador |
| 5 Àrea recreativa | 6 Santuari Mare de Déu dels Angels |
| 7 Molins | 8 Cova Tallada |
| 9 Torre Gerro | 10 Plana S. Jeroni |
| 11 Cim Montgó | |

Services



Restaurant



Toilets



Car park

Equipment



Recommendations

- Avoid the midday sun.
- Hunting season from 12 October to 6 January.
- Guided visits are possible: Montgó Nature Park (966 423 205)
- Emergency telephone number 112



Topographical Map of Montgó

PR PORT XÀBIA - MONTGÓ

CROSSROAD CALA TANGÓ

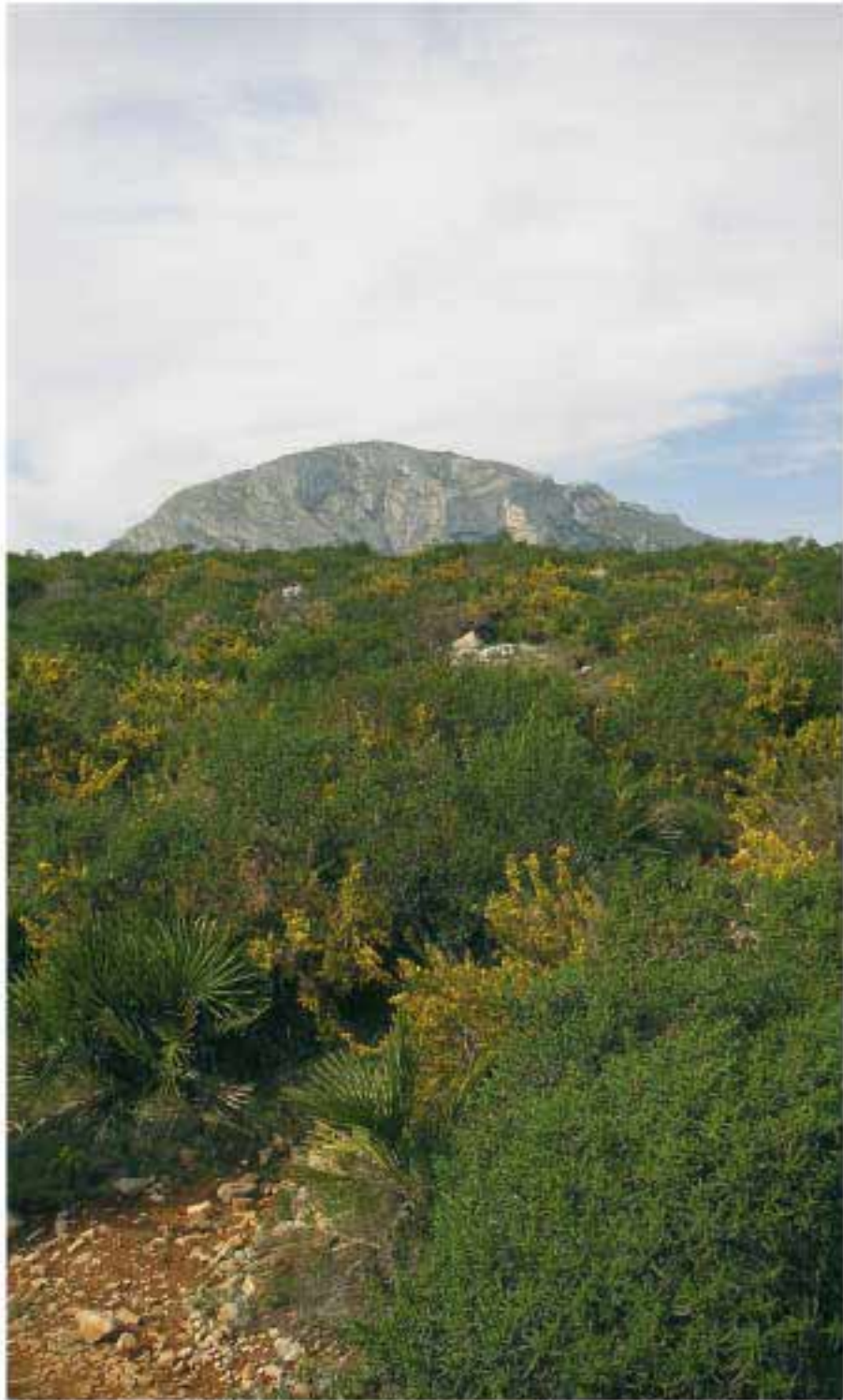
CROSSROAD MOLINS



Outline of footpath PR cv 355

PORT XÀBIA - MONTGÓ

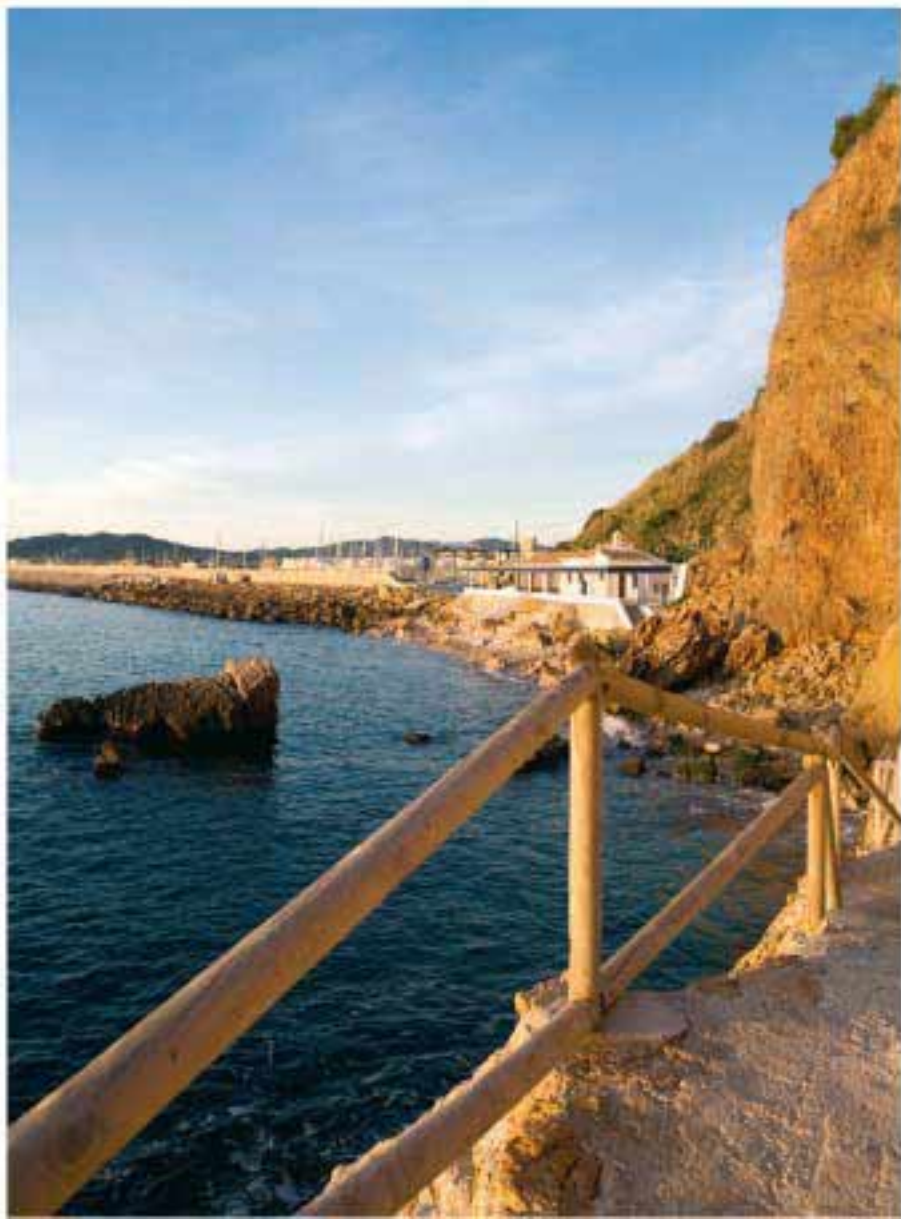




The Port-Montgó PR (Short distance route) winds its way exclusively around the Montgó Nature Park, located on the last spurs of the Betics Mountain Range, with a total of 7,503.99 hectares of protected land pertaining largely to the municipal districts of Xàbia and Dénia.

The Montgó park is located very close to the coast, connected by a flat area known as “les Planes” extending to the Cape of Sant Antoni, and then cutting off abruptly at the Mediterranean to form picturesque cliffs.

This area has some of the most spectacular scenery along the coastline of the Valencia region.



PR CV 355 Port Xàbia-Montgó



The area of coast that surrounds Sant Antoni cape was classed as a Marine Reserve in 1993, due to the variety of its environments, which allow benthic fauna to thrive, some of which have great ecological interest, such as the Posidonia, or sea grass, prairies.

Because of its privileged location, this towering spur of the Betics has long been part of local culture, and, through the ages, has been used in a variety of ways: a settlement area, a defensive watchtower, a hunting and foraging area... a place for enjoyment and recreation. The remains of human presence can be seen throughout the park and its environs; vestiges of ancient civilisations, age-old customs and more modern usages, in a balanced combination of man-made and natural surroundings.

PR CV 355
PORT XÀBIA-MONTGÓ



CROSSROAD CALA TANGÓ

TIME	DISTANCE m.	ALTITUDE m.	DESCRIPTION
00:00	0	2	Start on a path that leaves from the Levante quay, next to the Yacht Club. Continue up this path until you enter a small ravine.
00:05	50	27	Pass by a path to the right and continue until you reach a signpost pointing to an ascent to your right.
00:15	348	12	When the path forks, take the left hand path. Start zigzagging down and cross the ravine.
00:18	398	21	After a short ascent you reach a flat area with a palm tree and ruins to the left.
00:20	480	0	Continue descending to the right among the rocks until you reach the Cove, where you will see the old spinny, or rescue boom, to the right.



CROSSROAD MOLINS

TIME	DISTANCE m.	ALTITUDE m.	DESCRIPTION
00:00	0	163	Leave from the ‘Mare de Déu dels Angels’ sanctuary along the monastery path.
00:15	581	194	You reach the Els Molins Lookout point. This is a good spot to momentarily abandon the road and take in a close-up view of Els Molins and Xàbia bay. Head back to the lookout point and rejoin the road to the right, where the track turns into a path.
00:30	1.389	100	At the end of the path you reach a tarmacked track. Go down a few steps, between a water tank and a chalet, leading you to the Puig-Molins road.
00:40	2.470	15	Continue to the left and, at the first bend along the Benigàmin road, you reach the Camí Vell de la Mar. Veer left until you reach a roundabout with a fishing boat.
00:50	3.260	2	Head down the ‘Cristo del Mar’ road until you reach the promenade.
01:00	3.847	2	Continue to the left, leaving the fish market and the Yacht Club behind, until it ends at the Levante quay, the starting point for the Port-Montgó PR.



PR PORT XÀBIA - MONTGÓ

TIME	DISTANCE m.	ALTITUDE m.	DESCRIPTION
00:00	0	2	Start the route at the Levante quay, next to the Yacht Club.
00:05	50	27	Follow the path that climbs towards the Tangó Cove trail.
01:00	1.886	156	Stay to the left and after a fairly steep climb you reach the Sant Antoni lookout point.
01:15	2.978	159	Follow the road away from the lighthouse and turn left to take a footpath through a pine wood. Cross the road and look for the Montgó Nature Park signpost, which indicates the path to a recreation area.
01:45	4.713	163	Continue along a forest path to a rangers' cabin. At 400 metres you reach the sanctuary of Our Lady of the Angels (Mare del Déu dels Àngels). From here you can veer off to Els Molins or carry on to Montgó.
02:00	5.678	175	Stay on the road for a while and then take the route to Plana de Sant Jeroni. At 600 metres, leave the main route and take the footpath to the right hand side. When the paths cross 100 metres down, stay to the right.
02:15	6.646	150	Begin the descent of the ravine with a downclimb assisted by a chain. Take care when descending due to the presence of scree, or loose stones.
02:20	7.049	10	You will come out opposite the sea, where access to the cave is indicated to the right.
02:30	7.592	15	Continue for 550 metres on the path that runs along the coast, before reaching the so-called 'Freshwater Ravine' (Barranc de l'Aiguadolc). Carry straight on, ascending a flight of 80 steps first, followed a little further on by a 28-step flight.
03:05	8.301	132	Continue along a dirt track and keep to the left when it forks. Follow the steep incline up to the Gerro tower.
03:30	9.734	177	Head south along a path, flanking the ravine until you reach the ruins of a house, where the path ends and joins a route that leads you to the Sant Antoni Cape road.
03:45	10.507	190	Turn right and walk along the road for 250 metres. Cross the Xàbia-Dénia road and follow a path through a small pine wood. When you reach a firebreak, turn right and after 200 metres enter the pine wood to the left. After traversing the wood, take another firebreak to the left.
04:05	11.670	216	At a crossroads there's a sign with information on the route. Carry straight on, cross a channel and turn right at the junction.
04:45	13.201	300	The track becomes a path and joins the Dénia PR 152.
05:20	14.064	410	Zigzag upwards to the Penya Roja.
06:20	15.274	605	Continue zigzagging upwards to the Montgó balcony, a good spot to take a rest and enjoy fantastic views of Xàbia.
06:45	15.951	753	Follow the signs to the top of the Montgó. This is the final and most difficult stretch because the path ends and you have to clamber over the rocks. Once you have reached the top, 753 metres above sea level, take in the beautiful panorama while resting.
07:45	20.231	216	Descend along the same path until you get to the initial information panel located at the Plana de St. Jeroni.



TOURIST INFO CENTRE

Pl. de la Iglesia 4
03730 Xàbia (Alicante)
T 96 579 43 56 - F 96 579 63 17
xabiacentre@touristinfo.net

TOURIST INFO PORT

Pl. Almirante Bastareche 11
03730 Xàbia (Alicante)
T 96 579 07 36 - F 96 579 60 57
info@xabia.org

TOURIST INFO ARENAL

Ctra.Cabo La Nao - Urb. La Plaza
03730 Xàbia (Alicante)
T 96 646 06 05 - F 96 579 62 58
xabiaarenal@touristinfo.net

www.xabia.org



EMERGENCIES 112