



## MARINE RESERVE OF CAP DE SANT ANTONI

Natural space with a priceless ecological and environmental value, integrated inside the *Montgó* Natural Park. A coastal landscape with splendid beauty, where stunning vertical rock faces alternate with small bays and canyons; fascinating features which mean that in a relatively small stretch of the coast, we can discover a rich diversity of environments and varied underwater topography. Its wealth and biodiversity have earned recognition from several major institutions. Snorkelling and scuba diver fans will discover a natural paradise in this reserve where they can practice their favourite sport as well as observe the benthos communities and coralligenous reefs, the prairies of *Posidonia Oceanica* (Seagrass), and even photograph sea creatures such as coral/anemone, sponges, prawns, groupers, moray eels, corva drum fish, sargo bream or salema porgy bream.



The Marine Reserve can be accessed by ship or in any case, by means of the hiking routes, for example, the *Cova Tallada* or the route of the *Tangó*. To assure its conservation, its access has been restricted and controlled. Visitors must request a permit from the Local Police authority in order to practice any type of scuba diving. Likewise, one must avoid travelling through the zone with a motor boat. Fishing and the capture of any organisms are prohibited. Discarding any type of waste into the sea or coast is also forbidden.

## NAUTICAL SPORTS

Xàbia and its rich coasts full of cliffs, islets, small coves and beaches with crystalline water, as well as the wealth of its ocean floor, provide unlimited options to enjoy nautical sports, especially for those who love snorkelling and scuba diving. For people who wish to become initiated in scuba diving, we have seven scuba diving clubs and for more experienced divers, there are different underwater routes.

There are various options to discover Xàbia by sea, such as boat excursions which can be enjoyed most of the year and also facilitate visits to the neighbouring towns; there are also nautical vehicle rentals ranging from sail boats to motor yachts, jet skies, kayaks or canoes, etc. which permit you to explore areas inaccessible on foot such as the islets called *Descobridor* and *Portitxol* and the caves: *Orguens*, *Llop marí*, *Tabac*, etc.



## XÀBIA, EXPERIENCE THE MEDITERRANEAN SEA

In a unique alliance, the sea, wind and time have perpetually sculpted the extensive Xàbia coast to create highly diverse landscapes. It is undoubtedly considered to be one of the most beautiful sections of the peninsular Mediterranean coast. This coast is characterized by impressive cliffs, breathtaking coves and beaches with crystal-clear water, islets, caves and capes which you will never forget. Throughout the centuries, the presence of man have also left their trace in our seaside: watchtowers and coastal defence fortifications, quarries to obtain natural resources such as the "tosca" sandstone, salted fish factories from the Roman Period, as well as curious fishing structures traditionally known as "pesqueres", still visible from the sea to this day. Don't miss the opportunity to discover the precious landmarks of our natural and cultural heritage. A lovely stroll, a bicycle route or a sea excursion by boat, kayak, canoe or jet ski are excellent ways to discover the best of what this spectacular coast has to offer.



## BEACHES AND COVES

The unique features of the Xàbia coast have created a wide variety of coves and beaches of sand, gravel or rock which are scattered over its 25-km coast line. Ranging from open beaches such as the *L'Arenal* or *La Grava*, which are fully equipped with all services, to small coves with transparent waters, such as *La Barraca*, *Ambolo* or *Granadella*. In all these spots, you can enjoy the peace and beauty of the scenery as well as practice nautical sports or even hike along the different trails which border the coast.



Access signs to the scenic viewpoints

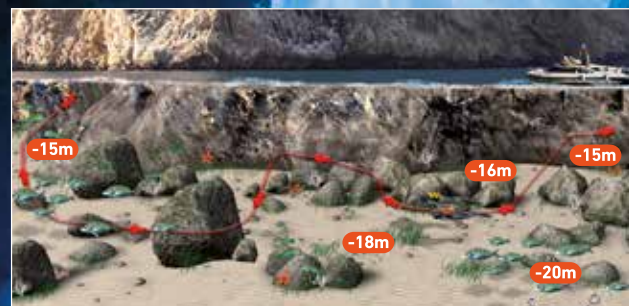
## SCENIC VIEWPOINTS

One of the main attractions of our beautiful seashore is represented by the exceptional panoramic views which can be enjoyed from its scenic viewpoints. Xàbia overlooks the sea from these fifteen scenic viewpoints which are strategically located along the coast; they can be easily accessed by vehicle, bicycle or on foot.

- |                      |                             |
|----------------------|-----------------------------|
| 1 Cap de Sant Antoni | 10 Cap Negre                |
| 2 Els Molins         | 11 Cap de la Nau            |
| 3 Punta de L'Arenal  | 12 Les Pesqueres            |
| 4 Séquia de la Nòria | 13 Ambolo                   |
| 5 Cala Blanca        | 14 Castell de la Granadella |
| 6 Caletes            | 15 Granadella               |
| 7 Creu del Portitxol |                             |
| 8 L'illa             |                             |
| 9 La Falzia          |                             |



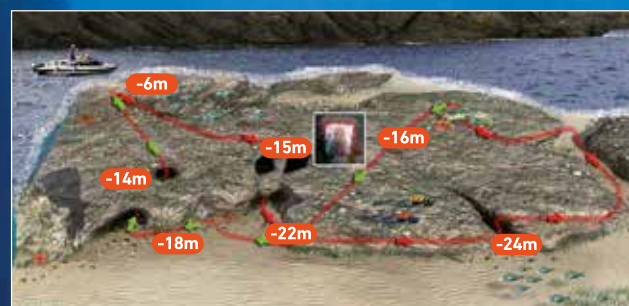
## UNDERWATER ROUTES



### SUB1

#### RESERVA

Average level.  
Approx. duration: 50 min.  
Max. depth: -20 m.  
Access with boat.  
Torch.



### SUB4

#### MONA DEL CAP PRIM

Average level.  
Max. depth: -29 m.  
Access with boat.  
Torch.



### SUB6

#### MONA DE L'ILLA

Average level.  
Max. depth: -22 m.  
Access with boat.  
Torch.



### SUB8

#### L'ESCUILL DE SANT PERE O BERGANTÍ

Experienced level.  
Max. depth: -30 m.  
Access with boat.  
Air Tank - 15 litres.  
Torch, Compass.



### SUB2

#### L'ESCUILL DEL CAP DE SANT ANTONI

Average level.  
Approx. duration: 50 min.  
Max. depth: -21 m.  
Access with boat.  
Torch.



### SUB5

#### L'ILLA

Average level.  
Max. depth: -21 m.  
Access with boat.  
Torch.



### SUB7

#### CAP NEGRE

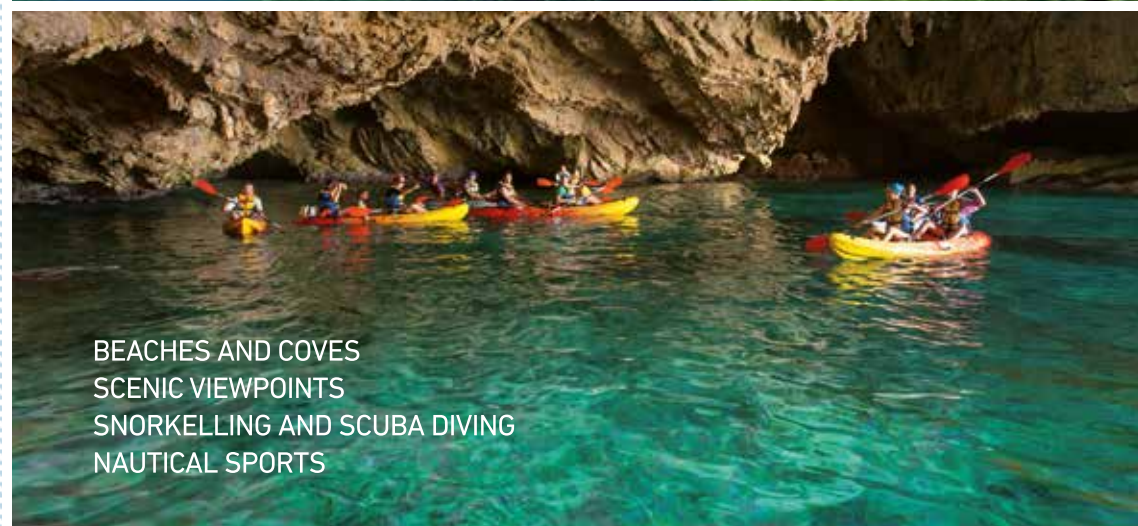
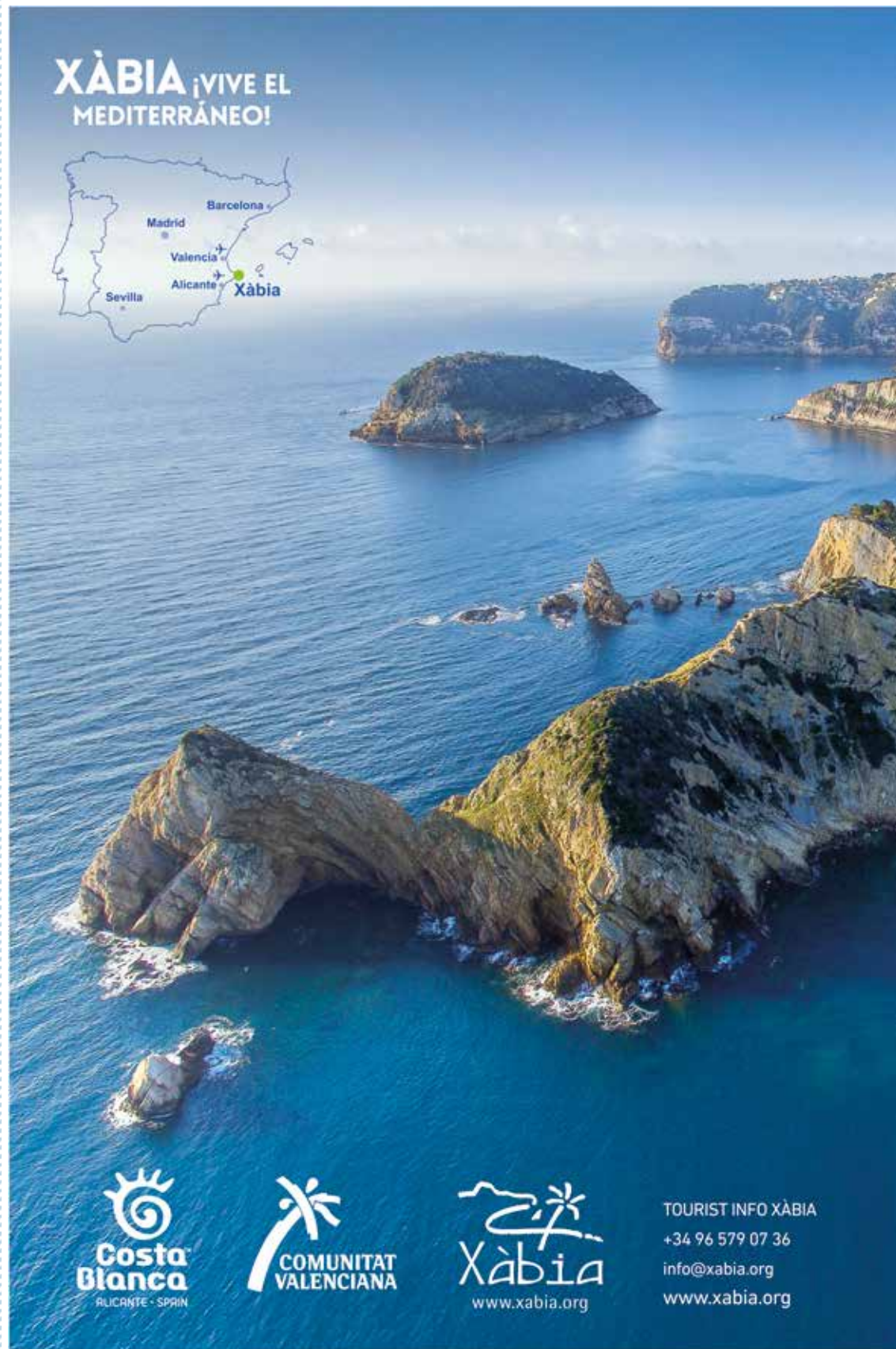
Average level.  
Max. depth: -22 m.  
Access with boat.  
Torch.



### SUB9

#### ILLA DEL DESCORRIDOR

Low Level.  
Max. depth: -18 m.  
Access with boat.  
Torch.



BEACHES AND COVES  
SCENIC VIEWPOINTS  
SNORKELLING AND SCUBA DIVING  
NAUTICAL SPORTS





### THE COVA TALLADA

Located in the Marine Reserve of *Cap de Sant Antoni*, there is a large cave facing the sea with a 400-m extension and the majority of it was excavated by mankind since the Medieval Period. The local *tosca* sandstone was quarried to construct buildings. The marks left by countless generations of *"tosca"* sandstone stone-cutters can still be seen on its walls and ceilings. In 1599, it received a royal visit from King Felipe III.



### MUNTANYAR

The most important *"tosca"* sandstone quarry in the entire Valencian coast. This local sandstone has been used since the Roman Period with a rich legacy in the traditional architecture. Next to *Muntanyar*, the other major *"tosca"* sandstone quarry is the *Cova Tallada*. Its extraction is now prohibited.



### ARCHEAOLOGICAL SITE: PUNTA DEL ARENAL "CLOT DE LA REINA"

Exceptional settlement from the Roman Age, of which a large excavated basin has been conserved, known as the *"Clot de la Reina"*, which formed part of a factory which manufactured salted fish.



### SÉQUIA DE LA NÒRIA

A large canal from the Roman Period, which was sculpted and excavated on the rock which permitted the entry of saltwater to form a salt marsh zone called the *Saladar*. In the Middle Ages, a waterwheel was added, a mechanism moved by an animal, with a large vertical wooden wheel which transported the water to the salt marsh.



### PESQUERES

Thatch, rope and wood structures, located in places practically inaccessible from the steep cliff walls, from which local fishermen used diverse techniques and tools to catch the best fish. The majority are no longer in use.

### WATCHTOWERS

The *Ambolo* and the *Portitxol* watchtowers are structures dating back to the 16th Century and their function was the surveillance and maritime defence against the pillaging raids and attacks by North African pirates. They are currently private property.




### CASTELL DE LA GRANADELLA

A small coastal fortification for the surveillance and coastal defence from 18th century. Access from the cove by Hiking route CV-354. Spectacular views of the cove. Duration: 90 min.



	Urban beach		Rock		Blue flag		BUS	Bus stop		Restaurant		Hammocks and sunshades		Pedal boat		Viewpoint		Defensive Fortification
	Rustic cove		Sea conditions		Pedestrian access		TAXI	Taxi rank		Snorkelling		Footbath		Playground and sport area		Beach		Archaeological Site
	Nudist		Mooring buoy		Disabled access		WC	Toilets WC		Footbath		Showers		Motorboat		Bicycle Route		Sea Cave
	Sand		Lifeguard		Seafront promenade		Refreshment stand	Refreshment stand		Cave		Walkway		Jet ski		Snorkelling Route		Cave
	Pebbles		First-Aid post		Car park		H	Hotel		Scuba Diving Route		Pesqueres				TOURIST INFO		Cave



# FOOTPAHT ROUTES

<b>PR</b>	<b>CV   355</b>	<b>Port-Montgó</b> 16 km. / 6h. 45' Medium-high
<b>SL</b>	<b>CV   98</b>	<b>Cap Prim</b> 2,1 km. / 1h. Low
<b>SL</b>	<b>CV   97</b>	<b>Cala Barraca</b> 1,5 km. / 45' Low
<b>PR</b>	<b>CV   354</b>	<b>Granadella</b> 13,6 km. / 4h.30' Medium

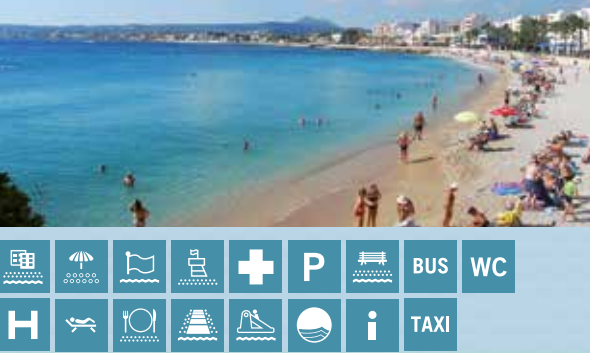
### SNK1



### Cova Tallada

This is undoubtedly one of the best spots to go snorkelling. The *Cova Tallada* can be accessed by sea, which is highly recommended by kayak or canoe or by means of hiking paths from the *Montgó* Natural Park. Once there, you may enter the water from the cave itself or from the other two windows in the rock face which face the sea. Here, we find a turquoise sea floor where the water is usually calm since it forms a type of pool sheltered from the open sea by a rock finger. The suggested route is to swim around the interior part of this area keeping the wall to our right.

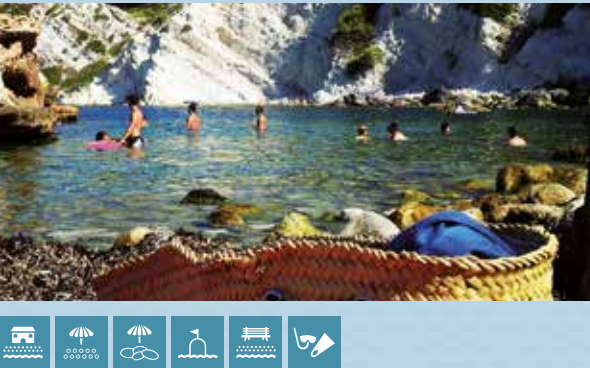
### LA GRAVA



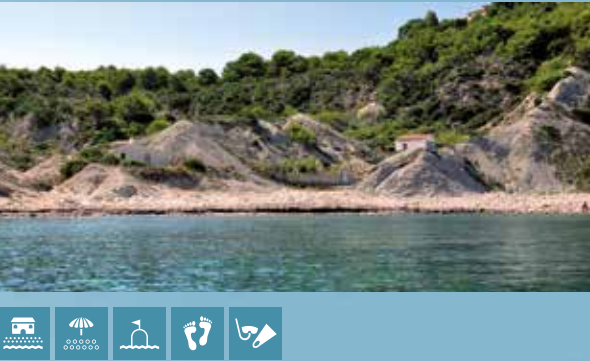
### L'ARENAL



### CALA BLANCA / 1a i 2n Caleta



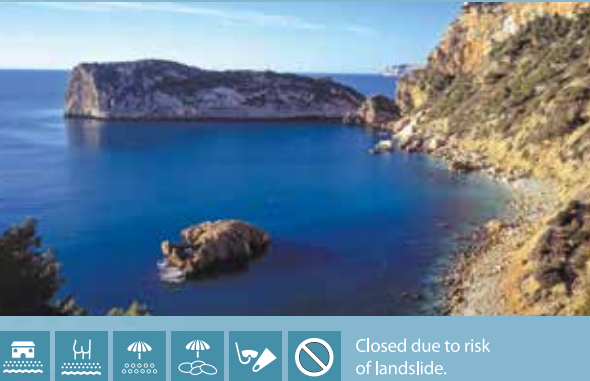
### CALA SARDINERA



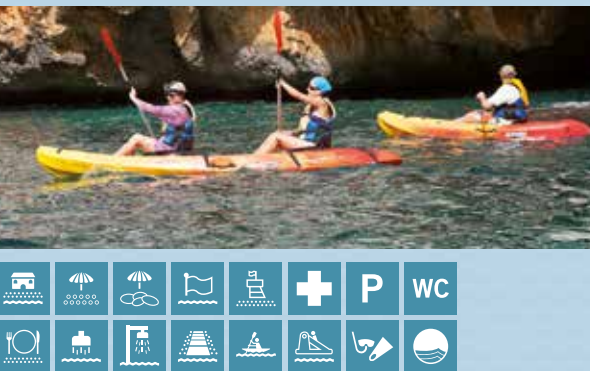
### CALA BARRACA / Portitxol



### CALA AMBOLO



### LA GRANADELLA



### SNK2 SUB3



### Cala Tangó

The small cove of the *Tangó* or *Pope*, as it is also known, is located to the left of the north jetty of the Xàbia port. Its access is not easy, since we must walk on stone blocks at the edge of the seaside under a restaurant terrace. The proposed route leads us towards a wall on our left and during the route, we encounter several cliffs which extend above the water. In the degree that we separate from the coast, the depth of the water gradually increases as well as the size of the rocks on the sea floor, until at a depth of -3 m, we can begin to perceive the appearance of the first clumps of the rich green prairie of the *Posidonia Oceánica*.

### MUNTANYAR I



### MUNTANYAR II



### SNK3



### Cala Blanca

We leave the busy *Playa de L'Arenal* behind and head south, until we reach the *Cala Blanca*. If we continue walking approx. 300 m, we arrive at a second cove, the place selected for our underwater route. This is a small cove which has a rocky point which extends like a rock finger into the sea. We may enter the water from this point and discover its brilliant rocky sea floor. It has a relatively shallow depth, of -1 m, however as we move away from the coast, it progressively gets deeper. When we have turned beyond the point and entered the open sea, we can access a luxuriant prairie of *Posidonia oceanica*. If we approach this rock finger from the north, we return to the sandy beach and once again to its extensive rock platform covered with algae.



### SNK4



### La Barraca

The *Cala de la Barraca* is one of the coast's most colourful coves, not just in Xàbia but in the entire Valencian Community. In this cosy large cove with gravel and boulders, there are a wide variety of options to go snorkelling. We choose to explore the North zone of the cove. Once we are in the water, we can observe that the rock platform is segmented; its continuity has been interrupted by fractures which give the sea floor a grid-like appearance. As we advance into the open sea, the platform gains depth in a gentle shelf. Large boulders and rocky fingers appear like submerged islets, which we can bypass and then travel into the areas with *Posidonia Oceánica* and sandy banks.

### SNK5



### Cala Amboło

In order to reach *Ambolo* we must travel in the direction of *Cap de la Nau* up to the bypass to the cove, which we access at the street called Calle Richard Wagner. At first, a rocky bottom appears with medium size stones and as we advance, they merge into the *Posidonia* seagrass prairie and into stunningly beautiful sand banks. The proposed route consists in travelling completely around the islet which we find in the left zone, swimming around it and exploring the infinite points which attract our interest, since the extensive variety of sea bottoms houses an abundant biodiversity.

### SNK6 SUB10



### La Granadella

This amazing cove has everything which snorkelling fans could desire. Fully equipped with all services for sunbathers and users, the cove has a South-east orientation and it is near the islet called *Descobridor*, in the vicinity of *Cap de la Nau*. Our route begins in the left section of the cove. We enter the water and swim following the rock face. At -2 m depth, we find a small stone arch and hard rocky bottom with medium size stones which become increasingly bigger as we advance. The depths gradually increase and the shelf of the rock face increasingly has a steep vertical profile. Here, the depth is easily -5 m or more.